

A Property For Your Consideration...

Presented by: CAROL PLATT
CROSBY & ASSOCIATES, INC.
carol@crosbyandassociates.net
Phone: 863-293-5600
Fax: 888-823-0412

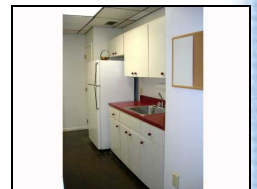


WINTER HAVEN

589 AVENUE K SE

\$ 1,500

MLS #: P4608705 Status: Active
Subdivision: WILROY HGHTS REPLAT
Lot Size (Acres): 0.10
Lot Size (SqFt): 4199
Lot #: 11
Total # Units: 1
Total # Bldgs: 1
Floors: 1
Ceiling Height: 8 to 9 Feet
Year Built: 1983



Property Style: Executive Suites Zoning: 0
Acreage: Zero Lot Line Lot Dim:
Gross SqFt: 1,500 Heated SqFt: 1,500
Net Lease SqFt: 1,500 Elevator:
Parking: 6 to 12 Spaces Location: Central Business Distric, Corner

Executive Offices with 3 bathrooms (hot water) and wet bar, waiting and conference rooms, large receptionist office plus 4 private offices, kitchen, storage and two covered parking spaces. Bricked traffic areas and central vacuum system. Sales tax is currently 7%. Security system included. Bookshelves in conference room may remain or be removed. Currently wired extensively for phone and ethernet capabilities. Office may also be easily utilized as six private offices with a receptionist/waiting room. Waiting room sofa, end tables, framed mirror, plants and standing American flag may remain for tenant use or be removed as well. This office is ready for immediate occupancy!

Exterior Construction:
Concrete Block, Stucco
Electric Service:

Miscellaneous:
Security System

From Cypress Gardens Blvd. turn N on 6th St., turn left(W) on Ave. K and offices will be the first end unit to your right on N side of 6th St. From Hwy 17 turn E on Avenue K and offices will be last unit on left at Cypress Square Professional Center